



Click to Watch Video

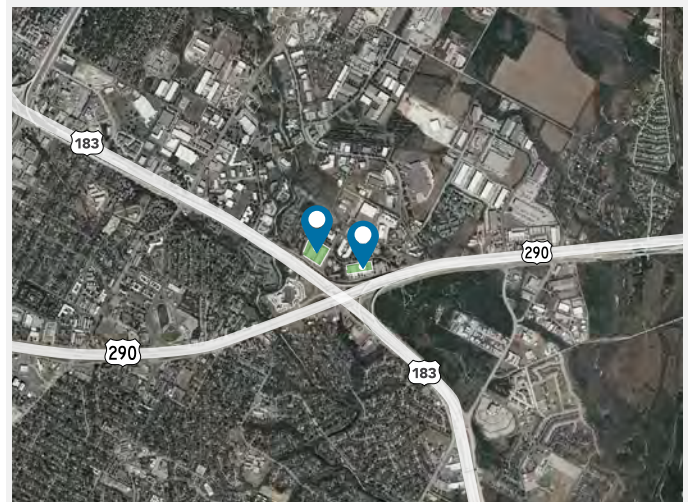
FOR LEASE

PROMONTORY POINT

2323, 2401, 2525 & 2535 RIDGEPOINT DR. AUSTIN, TX 78754

Property Highlights

- Shallow Bay Industrial
- Flex/Value Office/Life Science
- Ample Glass
- +/- 20' Clear Height
- Class A Construction & Finishes
- Immediate Access to Hwy 183 & Hwy 290
- 4:7:1,000 Parking
- Great Visibility/Signage Opportunity
- Close Proximity to the Domain, CBD, and Austin- Bergstrom International Airport



Northeast Submarket

For Leasing Information:

Mitchell Becker
C (512) 481-3012
mitchell.becker@streamrealty.com

Adam Green
C (512) 481-3010
adam.green@streamrealty.com

Will Nichols
C (512) 481-3009
wnichols@streamrealty.com

Leased by:

STREAM

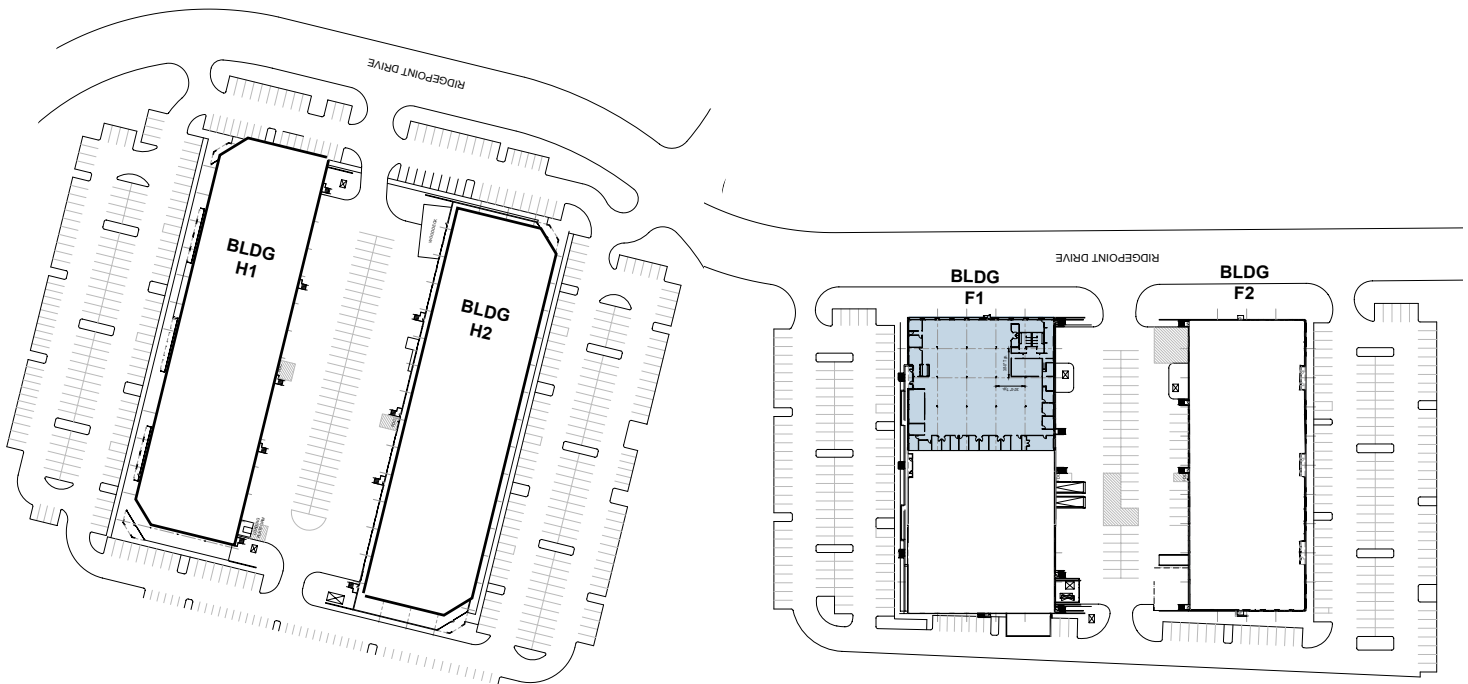
Owned by:

BLP BRIDGE LOGISTICS PROPERTIES

FOR LEASE

PROMONTORY POINT

2323, 2401, 2525 & 2535 RIDGEPOINT DR. AUSTIN, TX 78754



For Leasing Information:

Mitchell Becker
C (512) 481-3012
mitchell.becker@streamrealty.com

Adam Green
C (512) 481-3010
adam.green@streamrealty.com

Will Nichols
C (512) 481-3009
wnichols@streamrealty.com

Leased by:

STREAM

Owned by:

BLP BRIDGE
LOGISTICS
PROPERTIES

FOR LEASE

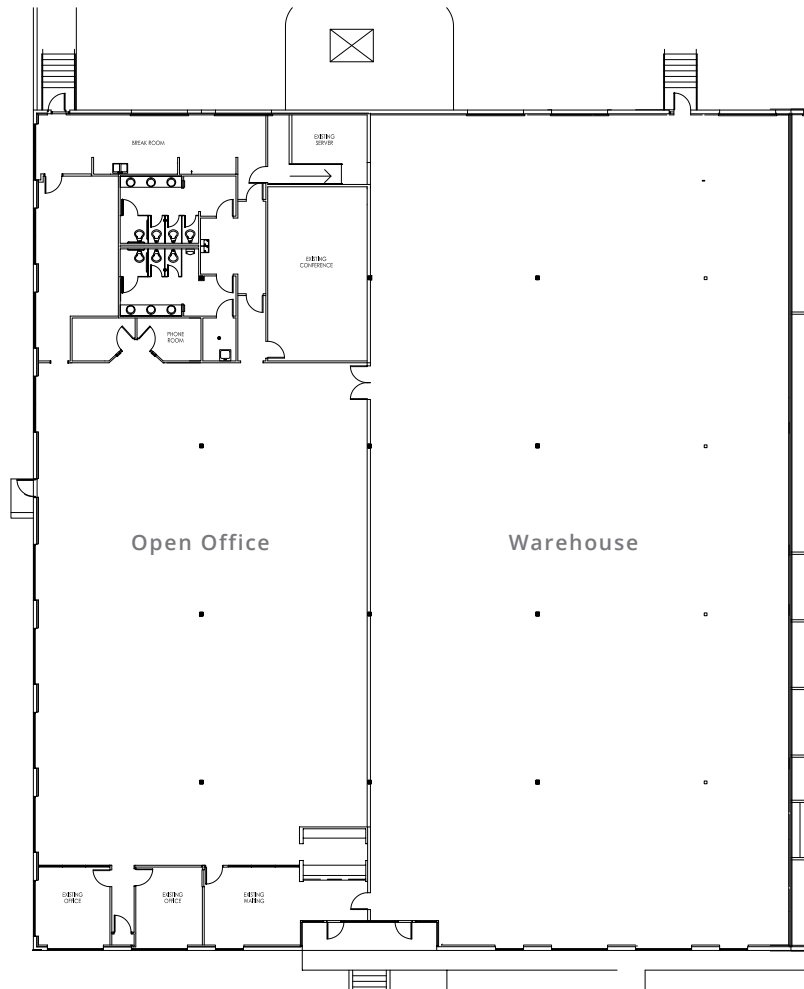
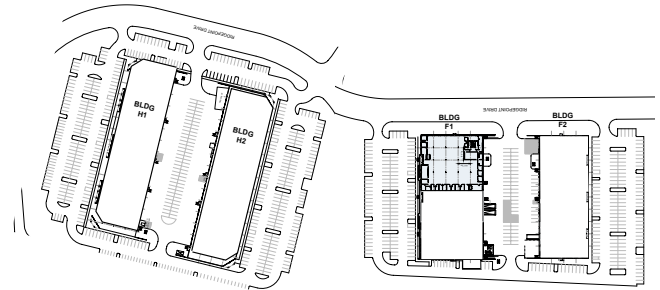


Click to View
360 Tour

PROMONTORY POINT

2323, 2401, 2525 & 2535 RIDGEPOINT DR. AUSTIN, TX 78754

BLDG. F1, SUITE 100 - 20,278 SF



For Leasing Information:

Mitchell Becker
C (512) 481-3012
mitchell.becker@streamrealty.com

Adam Green
C (512) 481-3010
adam.green@streamrealty.com

Will Nichols
C (512) 481-3009
wnichols@streamrealty.com

Leased by:

STREAM

Owned by:

BLP BRIDGE
LOGISTICS
PROPERTIES

FOR LEASE



Click to View
360 Tour

PROMONTORY POINT

2323, 2401, 2525 & 2535 RIDGEPOINT DR. AUSTIN, TX 78754

BLDG. F1, SUITE 100 - 20,278 SF



For Leasing Information:

Mitchell Becker
C (512) 481-3012
mitchell.becker@streamrealty.com

Adam Green
C (512) 481-3010
adam.green@streamrealty.com

Will Nichols
C (512) 481-3009
wnichols@streamrealty.com

Leased by:

STREAM

Owned by:

BLP BRIDGE
LOGISTICS
PROPERTIES